

RC-Series DUO, Single-Acting Cylinders

ENERPAC 
POWERFUL SOLUTIONS. GLOBAL FORCE.

▼ From left to right: RC-506, RC-50, RC-2510, RC-154, RC-10010, RC-55, RC-1010



- **Unique GR2 Bearing Design, reduces wear, extending life**
- **Collar threads, plunger threads and base mounting holes enable easy fixturing (on most models)**
- **Designed for use in all positions**
- **High strength alloy steel for durability**
- **Redesigned cylinder thread protector for ease of use**
- **Heavy-duty, pretensioned spring improves retraction speed**
- **Baked enamel finish for increased corrosion resistance**
- **CR-400 coupler and dust cap included on all models**
- **Plunger wiper reduces contamination, extending cylinder life.**

▼ *Foundation repair: to re-stabilize the foundation, the 308 ton silo needed to be lifted, levelled and structurally supported. 25 ton RC-Series hydraulic jacks were attached to a bracket on the top of each steel pier. Powered by a Z-Class pump, the hydraulic jacks applied 20 ton of force at each placement to lift the silo 5,1 cm.*



The Industry Standard General Purpose Cylinder



Saddles

All RC cylinders (except RC-50, 101) are equipped with hardened removable grooved saddles. For tilt and flat saddles, see the RC-Series accessory page.

Page: 10



Base Plates

To ensure the stability of cylinders for lifting applications, base plates are available for 10, 25 and 50 ton RC cylinders.

Page: 10



Specialty Attachments

For solving all kinds of application problems, specialty attachments are available for 5, 10 and 25 ton RC cylinders.

Page: 167

▼ *Synchronous lifting set-up for 200 ton petrochemical process module using twelve RC-2510 cylinders. To ensure the stability of the cylinders JBI-25 base plates are installed.*





Single-Acting, General Purpose Cylinders




GR2 Bearing Technology

The exclusive GR2 is a unique bearing design on RC-Series DUO cylinders which absorbs eccentric load stresses to protect your cylinder against abrasion, over-extending or plunger blow-

outs and jamming or top-end mushrooming. As a result, RC-Series DUO cylinders provide long, trouble-free operation.

▼ QUICK SELECTION CHART

For complete technical information see next page.

Cylinder Capacity	Stroke	Model Number	Cylinder Effective Area	Oil Capacity	Collapsed Height	
ton (kN)	(mm)		(cm ²)	(cm ³)	(mm)	(kg)
5 (45)	16	RC-50	6,5	10	41	1,0
	25	RC-51	6,5	16	110	1,0
	76	RC-53	6,5	50	165	1,5
	127	RC-55 *	6,5	83	215	1,9
	177	RC-57	6,5	115	273	2,4
10 (101)	232	RC-59	6,5	151	323	2,8
	26	RC-101	14,5	38	89	1,8
	54	RC-102 *	14,5	78	121	2,3
	105	RC-104	14,5	152	171	3,3
	156	RC-106 *	14,5	226	247	4,4
	203	RC-108	14,5	294	298	5,4
	257	RC-1010 *	14,5	373	349	6,4
	304	RC-1012	14,5	441	400	6,8
15 (142)	356	RC-1014	14,5	516	450	8,2
	25	RC-151	20,3	51	124	3,3
	51	RC-152	20,3	104	149	4,1
	101	RC-154 *	20,3	205	200	5,0
	152	RC-156 *	20,3	308	271	6,8
	203	RC-158	20,3	411	322	8,2
	254	RC-1510	20,3	516	373	9,5
	305	RC-1512	20,3	619	423	10,9
25 (232)	356	RC-1514	20,3	723	474	11,8
	26	RC-251	33,2	86	139	5,9
	50	RC-252 *	33,2	166	165	6,4
	102	RC-254 *	33,2	339	215	8,2
	158	RC-256 *	33,2	525	273	10,0
	210	RC-258	33,2	697	323	12,2
	261	RC-2510	33,2	867	374	14,1
30 (295)	311	RC-2512	33,2	1033	425	16,3
	362	RC-2514 *	33,2	1202	476	17,7
	209	RC-308	42,1	880	387	18,1
	50 (498)	51	RC-502	71,2	362	176
101		RC-504	71,2	719	227	19,1
159		RC-506 *	71,2	1131	282	23,1
337		RC-5013	71,2	2399	460	37,6
75 (718)	156	RC-756	102,6	1601	285	29,5
	333	RC-7513	102,6	3417	492	59,0
95 (933)	168	RC-1006	133,3	2239	357	59,0
	260	RC-10010	133,3	3466	449	72,6

* Available as set, see note on this page.

RC Series



Capacity:

5 - 95 ton

Stroke:

16 - 362 mm

Maximum Operating Pressure:

700 bar



Think Safety

Manufacturer's rating of load and stroke are maximum safe limits. Good practice encourages using only 80% of these ratings.

Page: 266



Lightweight Aluminium Cylinders

If you need a higher cylinder capacity-to-weight-ratio the RAC-Series are the perfect choice.

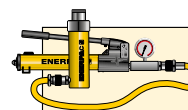
Page: 13



Gauges

Minimize the risk of overloading and ensure long, dependable service from your equipment. Refer to the System Components Section for a full range of gauges.

Page: 112



Cylinder-Pump Sets

All cylinders marked with an * are available as sets (cylinder, gauge, couplers, hose and pump) for your ordering convenience.

Page: 52

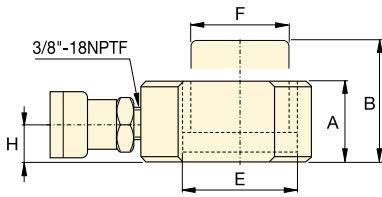
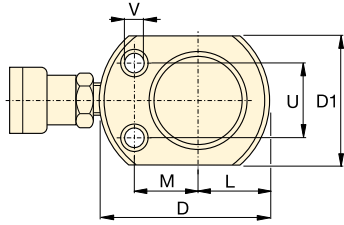


Proudly Distributed By

TRIDENT AUSTRALIA
FLUID SYSTEMS & COMPONENTS

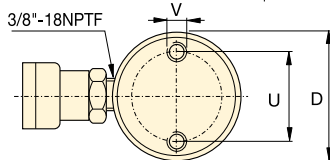
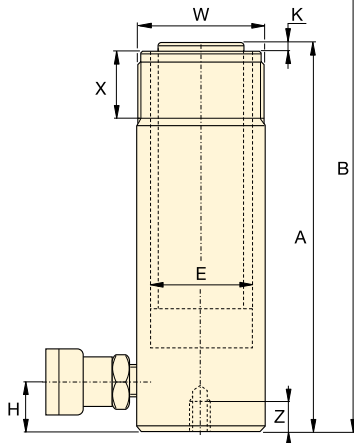
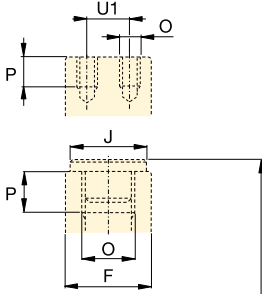
RC-Series DUO, Single-Acting Cylinders

ENERPAC
POWERFUL SOLUTIONS. GLOBAL FORCE.

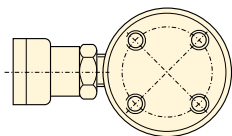


RC-50

RC-101 only
(U1 = 19 mm)



RC-51 - RC-5013



RC-1006, RC-10010



Speed Chart

See the Enerpac Cylinder Speed Chart in our 'Yellow Pages' to determine your approximate cylinder speed.

Page: **275**

◀ For full features see previous page.

Cylinder Capacity ton (kN)	Stroke (mm)	Model Number	Cylinder Effective Area (cm ²)	Oil Capacity (cm ³)	Collapsed Height A (mm)	Extended Height B (mm)	Outside Dia. D (mm)	
5 (45)	16	RC-50 ²⁾	6,5	10	41	57	58 ³⁾	
	25	RC-51	6,5	16	110	135	38	
	76	RC-53	6,5	50	165	241	38	
	127	RC-55 ¹⁾	6,5	83	215	342	38	
	177	RC-57	6,5	115	273	450	38	
10 (101)	232	RC-59	6,5	151	323	555	38	
	26	RC-101 ⁴⁾	14,5	38	89	115	57	
	54	RC-102 ¹⁾	14,5	78	121	175	57	
	105	RC-104	14,5	152	171	276	57	
	156	RC-106 ¹⁾	14,5	226	247	403	57	
	203	RC-108	14,5	294	298	501	57	
	257	RC-1010 ¹⁾	14,5	373	349	606	57	
15 (142)	304	RC-1012	14,5	441	400	704	57	
	356	RC-1014	14,5	516	450	806	57	
	25	RC-151	20,3	51	124	149	69	
	51	RC-152	20,3	104	149	200	69	
	101	RC-154 ¹⁾	20,3	205	200	301	69	
	152	RC-156 ¹⁾	20,3	308	271	423	69	
	203	RC-158	20,3	411	322	525	69	
25 (232)	254	RC-1510	20,3	516	373	627	69	
	305	RC-1512	20,3	619	423	728	69	
	356	RC-1514	20,3	723	474	830	69	
	26	RC-251	33,2	86	139	165	85	
	50	RC-252 ¹⁾	33,2	166	165	215	85	
	102	RC-254 ¹⁾	33,2	339	215	317	85	
	158	RC-256 ¹⁾	33,2	525	273	431	85	
	210	RC-258	33,2	697	323	533	85	
30(295)	261	RC-2510	33,2	867	374	635	85	
	311	RC-2512	33,2	1033	425	736	85	
	362	RC-2514 ¹⁾	33,2	1202	476	838	85	
	209	RC-308	42,1	880	387	596	101	
	50 (498)	51	RC-502	71,2	362	176	227	127
		101	RC-504	71,2	719	227	328	127
		159	RC-506 ¹⁾	71,2	1131	282	441	127
337		RC-5013	71,2	2399	460	797	127	
75 (718)	156	RC-756	102,6	1601	285	441	146	
	333	RC-7513	102,6	3417	492	825	146	
95 (933)	168	RC-1006	133,3	2239	357	525	177	
	260	RC-10010	133,3	3466	449	709	177	

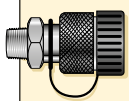
¹⁾ Available as set, see note on page 7.

²⁾ RC-50 cylinder has a non removable grooved saddle and no collar thread.

³⁾ RC-50: D1 = 41 mm, L = 20 mm, M = 25 mm.

⁴⁾ RC-101 has plunger thread and non-removable saddle.

Single-Acting, General Purpose Cylinders



Couplers Included!
CR-400 couplers included on all models. Fits all HC-Series hoses.

Capacity:
5 - 95 ton

Stroke:
16 - 362 mm

Maximum Operating Pressure:
700 bar

RC Series



Cylinder Bore Dia. E (mm)	Plunger Dia. F (mm)	Base to Adv. Port H (mm)	Saddle Dia. J (mm)	Saddle Protr. from Plgr. K (mm)	Plunger Internal Thread O	Plunger Thread Length P (mm)	Base Mounting Holes			Collar Thread W	Collar Thread Length X (mm)	Weight (kg)	Model Number
							Bolt Circle U (mm)	Thread V	Thd. Depth Z (mm)				
28,7	25,4	19	2)	2)	2)	2)	28	5,6 mm	—	—	—	1,0	RC-50 2)
28,7	25,4	19	25	6	3/4" - 16 UN	14	25	1/4" - 20 UN	14	1 1/2" - 16 UN	28	1,0	RC-51
28,7	25,4	19	25	6	3/4" - 16 UN	14	25	1/4" - 20 UN	14	1 1/2" - 16 UN	28	1,5	RC-53
28,7	25,4	19	25	6	3/4" - 16 UN	14	25	1/4" - 20 UN	14	1 1/2" - 16 UN	28	1,9	RC-55 1)
28,7	25,4	19	25	6	3/4" - 16 UN	16	25	1/4" - 20 UN	14	1 1/2" - 16 UN	28	2,4	RC-57
28,7	25,4	19	25	6	3/4" - 16 UN	16	25	1/4" - 20 UN	14	1 1/2" - 16 UN	28	2,8	RC-59
42,9	38,1	19	—	—	#10 - 24 UN	6	39	5/16" - 18 UN	12	2 1/4" - 14	26	1,8	RC-101 4)
42,9	38,1	19	35	6	1" - 8 UN	19	39	5/16" - 18 UN	12	2 1/4" - 14 UN	26	2,3	RC-102 1)
42,9	38,1	19	35	6	1" - 8 UN	19	39	5/16" - 18 UN	12	2 1/4" - 14 UN	26	3,3	RC-104
42,9	38,1	19	35	6	1" - 8 UN	19	39	5/16" - 18 UN	12	2 1/4" - 14 UN	26	4,4	RC-106 1)
42,9	38,1	19	35	6	1" - 8 UN	19	39	5/16" - 18 UN	12	2 1/4" - 14 UN	26	5,4	RC-108
42,9	38,1	19	35	6	1" - 8 UN	19	39	5/16" - 18 UN	12	2 1/4" - 14 UN	26	6,4	RC-1010 1)
42,9	38,1	19	35	6	1" - 8 UN	19	39	5/16" - 18 UN	12	2 1/4" - 14 UN	26	6,8	RC-1012
42,9	38,1	19	35	6	1" - 8 UN	19	39	5/16" - 18 UN	12	2 1/4" - 14 UN	26	8,2	RC-1014
50,8	41,4	19	38	9	1" - 8 UN	25	48	3/8" - 16 UN	12	2 3/4" - 16 UN	30	3,3	RC-151
50,8	41,4	19	38	9	1" - 8 UN	22	48	3/8" - 16 UN	12	2 3/4" - 16 UN	30	4,1	RC-152
50,8	41,4	19	38	9	1" - 8 UN	22	48	3/8" - 16 UN	12	2 3/4" - 16 UN	30	5,0	RC-154 1)
50,8	41,4	25	38	9	1" - 8 UN	25	48	3/8" - 16 UN	12	2 3/4" - 16 UN	30	6,8	RC-156 1)
50,8	41,4	25	38	9	1" - 8 UN	25	48	3/8" - 16 UN	12	2 3/4" - 16 UN	30	8,2	RC-158
50,8	41,4	25	38	9	1" - 8 UN	25	48	3/8" - 16 UN	12	2 3/4" - 16 UN	30	9,5	RC-1510
50,8	41,4	25	38	9	1" - 8 UN	25	48	3/8" - 16 UN	12	2 3/4" - 16 UN	30	10,9	RC-1512
50,8	41,4	25	38	9	1" - 8 UN	25	48	3/8" - 16 UN	12	2 3/4" - 16 UN	30	11,8	RC-1514
65,0	57,2	25	50	10	1 1/2" - 16 UN	25	58	1/2" - 13 UN	19	3 5/16" - 12 UN	49	5,9	RC-251
65,0	57,2	25	50	10	1 1/2" - 16 UN	25	58	1/2" - 13 UN	19	3 5/16" - 12 UN	49	6,4	RC-252 1)
65,0	57,2	25	50	10	1 1/2" - 16 UN	25	58	1/2" - 13 UN	19	3 5/16" - 12 UN	49	8,2	RC-254 1)
65,0	57,2	25	50	10	1 1/2" - 16 UN	25	58	1/2" - 13 UN	19	3 5/16" - 12 UN	49	10,0	RC-256 1)
65,0	57,2	25	50	10	1 1/2" - 16 UN	25	58	1/2" - 13 UN	19	3 5/16" - 12 UN	49	12,2	RC-258
65,0	57,2	25	50	10	1 1/2" - 16 UN	25	58	1/2" - 13 UN	19	3 5/16" - 12 UN	49	14,1	RC-2510
65,0	57,2	25	50	10	1 1/2" - 16 UN	25	58	1/2" - 13 UN	19	3 5/16" - 12 UN	49	16,3	RC-2512
65,0	57,2	25	50	10	1 1/2" - 16 UN	25	58	1/2" - 13 UN	19	3 5/16" - 12 UN	49	17,7	RC-2514 1)
73,2	57,2	57	50	10	1 1/2" - 16 UN	25	—	—	—	3 5/16" - 12 UN	49	18,1	RC-308
95,2	79,5	33	71	2	—	—	95	1/2" - 13 UN	19	5" - 12 UN	55	15,0	RC-502
95,2	79,5	33	71	2	—	—	95	1/2" - 13 UN	19	5" - 12 UN	55	19,1	RC-504
95,2	79,5	35	71	2	—	—	95	1/2" - 13 UN	19	5" - 12 UN	55	23,1	RC-506 1)
95,2	79,5	35	71	2	—	—	95	1/2" - 13 UN	19	5" - 12 UN	55	37,6	RC-5013
114,3	95,2	30	71	5	—	—	—	—	—	5 3/4" - 12 UN	44	29,5	RC-756
114,3	95,2	30	71	5	—	—	—	—	—	5 3/4" - 12 UN	44	59,0	RC-7513
130,3	104,9	41	71	2	—	—	140	3/4" - 10 UN	25	6 7/8" - 12 UN	44	59,0	RC-1006
130,3	104,9	41	71	2	—	—	140	3/4" - 10 UN	25	6 7/8" - 12 UN	44	72,6	RC-10010



Proudly Distributed By

TRIDENT AUSTRALIA
FLUID SYSTEMS & COMPONENTS

Cylinder Accessories for RC-Series Cylinders

ENERPAC
POWERFUL SOLUTIONS. GLOBAL FORCE.

SELECTION CHART

For use with Cylinder Capacity	Saddles			Base Plate	Mounting Block	Clevis Eyes	
	Flat	Grooved ¹⁾	Tilt			Base ⁴⁾	Plunger
ton (kN)							
5 (45)	A-53F ²⁾	A-53G ²⁾	-	-	RB-5 ²⁾ , AW-51 ²⁾ , AW-53 ²⁾	REB-5 ²⁾	REP-5 ²⁾
10 (101)	A-12 ³⁾ , A-102F ³⁾	A-102G ³⁾	CAT-10 ³⁾	JBI-10	RB-10, AW-102	REB-10	REP-10 ³⁾
15 (142)	-	A-152G	CAT-10	-	RB-15	REB-15	REP-10
25 (232)	A-29 ⁵⁾	A-252G	CAT-50	JBI-25	RB-25	REB-25	REP-25
30 (295)	A-29 ⁵⁾	A-252G	CAT-50	-	RB-25	-	REP-25
50 (498)	-	-	CAT-100	JBI-50	-	-	-
75 (718)	-	-	CAT-100	-	-	-	-
95 (933)	-	-	CAT-100	-	-	-	-

¹⁾ Standard on 5-30 ton RC-cylinders ²⁾ Except RC-50 ³⁾ Except RC-101 ⁴⁾ Mounting screws are included. ⁵⁾ Used with Bender Sets.

DIMENSION CHARTS

Model Number	Saddle Dimensions (mm)			A-53F, A-102F A-12, A-29	Model Number	Tilt Saddle Dimensions (mm)			Tilt
	A	B	C			A	B	C	
	Flat					Tilt			
A-53F	25	6	17		CAT-10	35	20	22	
A-102F	35	6	22		CAT-50	50	23	35	
A-12	51	48	1"-8 UNC						
A-29	51	48	1 1/2"-16 UNC						
	Grooved					Tilt			
A-53G	25	6	17		CAT-100	71	24	-	
A-102G	35	6	22						
A-152G	38	9	22						
A-252G	50	9	35						

Model Number	Base Plate Dimensions (mm)					JBI-10, 25	JBI-50
	A	B	C	D	E		
JBI-10	228	228	135	58	20		
JBI-25	279	279	140	86	26		
JBI-50	304	15	95	131	31		

Model Number	Mounting Block Dimensions (mm)								RB-5, -10 RB-15, -25	AW-51	AW-53	AW-102 (l=4,8)
	A	B	C	D	E	F	G	H				
RB-5	1 1/2"-16UN	88	76	-	25	-	-	-				
AW-51	1 1/2"-16UN	70	59	10	24	54	1 1/4"-16 UN	41				
AW-53	1 1/2"-16UN	72	7	7	19	57	1 1/4"-20 UN	10				
RB-10	2 1/4"-14UN	114	88	-	25	-	-	-				
AW-102	2 1/4"-14UN	100	82	16	30	76	7/16"-20 UN	58				
RB-15	2 3/4"-16UN	101	114	-	38	-	-	-				
RB-25	3 5/16"-12UN	127	165	-	50	-	-	-				

Type	Model Number	Clevis Eye Dimensions (mm)						Pin-to-Pin * (mm)	REB	REP
		A	B	C	D	E	F			
Base ⁴⁾	REB-5	44	47	14	16	16	25	60,2		
	REB-10	63	66	25	22	25	35	78,0		
	REB-15	76	66	25	22	25	35	78,0		
	REB-25	95	79	38	31	31	41	87,6		
Plunger	REP-5	28	45	14	16	16	19	-		
	REP-10	42	61	25	22	25	28	-		
	REP-25	57	71	38	31	31	35	-		

⁴⁾ Mounting screws are included.

* Pin to Pin - REB and REP Clevises fitted. Add cylinder collapsed height.