



High Pressure Hand Pump and Accessories

▼ HPT-1500



HPT, HT, B Series

Reservoir Capacity:
2,5 litres

Flow at Rated Pressure:
0,61 cm³/stroke

Maximum Operating Pressure:
1500 bar



Ultra-high pressure

This pump operates at ultra-high pressure, use only the specified fittings and hoses designed for these pressures.

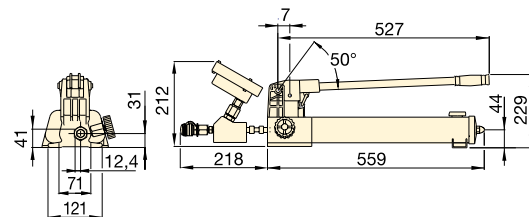


Applications

The hand pump is ideally suited for use with hydraulic bolt tensioning tools and hydraulic nuts.

Page: **56**

- Lightweight and portable high-pressure hand pump
- Two-speed operation displaces a larger volume of oil per stroke, reducing cycle times for many testing applications
- Includes a pressure gauge and coupler for direct connection to Enerpac GT-Series Bolt Tensioners
- Integrated relief valve set at 1500 bar.



1500 bar ULTRA-HIGH PRESSURE PUMP

Pump Type	Useable Oil Capacity (litres)	Model Number	Pressure Rating (bar)		Oil Displacement per Stroke (cm ³)		High Pressure Oil Port with female coupler	Weight (kg)
			1st stage	2nd stage	1st stage	2nd stage		
Two Speed	2,54	HPT-1500	14	1500	16,22	0,61	1/4" BSPM + BR-150	9,0

1500 bar HOSES

Model Number	Hose End 1	Hose End 2	Length (m)
HT-1503	1/4" BSPM 120° Cone	1/4" BSPM 120° Cone	1,0
HT-1510	1/4" BSPM 120° Cone	1/4" BSPM 120° Cone	3,0
HT-1503HR*	BH-150	BR-150	1,0
HT-1510HR*	BH-150	BR-150	3,0

* Includes dust caps.

1500 bar COUPLERS

Description	Complete Set	Female Half	Male Half
Quick Disconnect Coupler *	B-150	BR-150	BH-150
Quick Disconnect Coupler and Adaptor Kit *	BW-150AW	-	-
Quick Disconnect Blanking Coupler Set *	B-150B	-	-

* Includes dust caps.