



Proudly Distributed By

**TRIDENT AUSTRALIA**  
FLUID SYSTEMS & COMPONENTS

## Gauge Accessories

▼ Shown from left to right: GA-3, V-91, GA-1, GA-2, GA-4, NV-251, GA-918



### GA, NV, V Series

Maximum Operating Pressure:  
**700 bar**

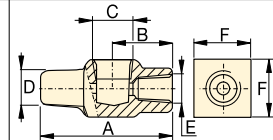
▼ A gauge is easily installed into your hydraulic system using a gauge adaptor.



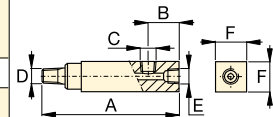
#### Gauge Adaptors (GA-Series)

- For easy mounting of a pressure gauge onto your system
- Male end screws into pump or cylinder port, female end accepts hose or coupler, 3<sup>rd</sup> port is for gauge connection
- GA-918 provides for swivel connection.

| Model Number | Gauge Port (NPTF) | Male End (NPTF) | Female End (NPTF) | Dimensions (mm) |    |           |           |           |    |
|--------------|-------------------|-----------------|-------------------|-----------------|----|-----------|-----------|-----------|----|
|              |                   |                 |                   | A               | B  | C         | D         | E         | F  |
| GA-1         | 1/2"              | 3/8"            | 3/8"              | 71              | 31 | 1/2" NPTF | 3/8" NPTF | 3/8" NPTF | 32 |
| GA-2         | 1/2"              | 3/8"            |                   | 155             | 35 | 1/2" NPTF | 3/8" NPTF | 3/8" NPTF | 32 |
| GA-3         | 1/4"              | 3/8"            |                   | 133             | 35 | 1/4" NPTF | 3/8" NPTF | 3/8" NPTF | 32 |
| GA-4         | 1/2"              | 1/4"            |                   | 111             | 35 | 1/2" NPTF | 1/4" NPTF | 3/8" NPTF | 32 |



GA-1



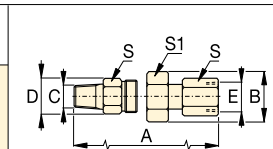
GA-2, GA-3, GA-4



#### Swivel Adaptor (GA-918)

- Simplifies gauge installation and reading.

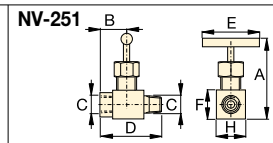
| Model Number | Dimensions (mm) |    |           |      |           |    |    |
|--------------|-----------------|----|-----------|------|-----------|----|----|
|              | A               | B  | C         | D    | E         | S  | S1 |
| GA-918       | 117             | 43 | 1/2" NPTF | 28,5 | 1/2" NPTF | 29 | 38 |



#### Needle Valves (V- and NV-Series)

- Both NV-251 and V-91 provide positive shut-off
- 303 stainless steel stem, 16 threads/in (NV-251).

| Model Number | Orifice (mm) | Thread Size | Dimensions (mm) |    |           |    |    |    |    |
|--------------|--------------|-------------|-----------------|----|-----------|----|----|----|----|
|              |              |             | A               | B  | C         | D  | E  | F  | H  |
| NV-251       | 4,3          | 1/4" NPTF   | 57              | 29 | 1/4" NPTF | 57 | 46 | 19 | 19 |
| V-91         | 4,8          | 1/2" NPTF   | 89              | 32 | 1/2" NPTF | 64 | 32 | 37 | 37 |



V-91

